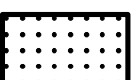

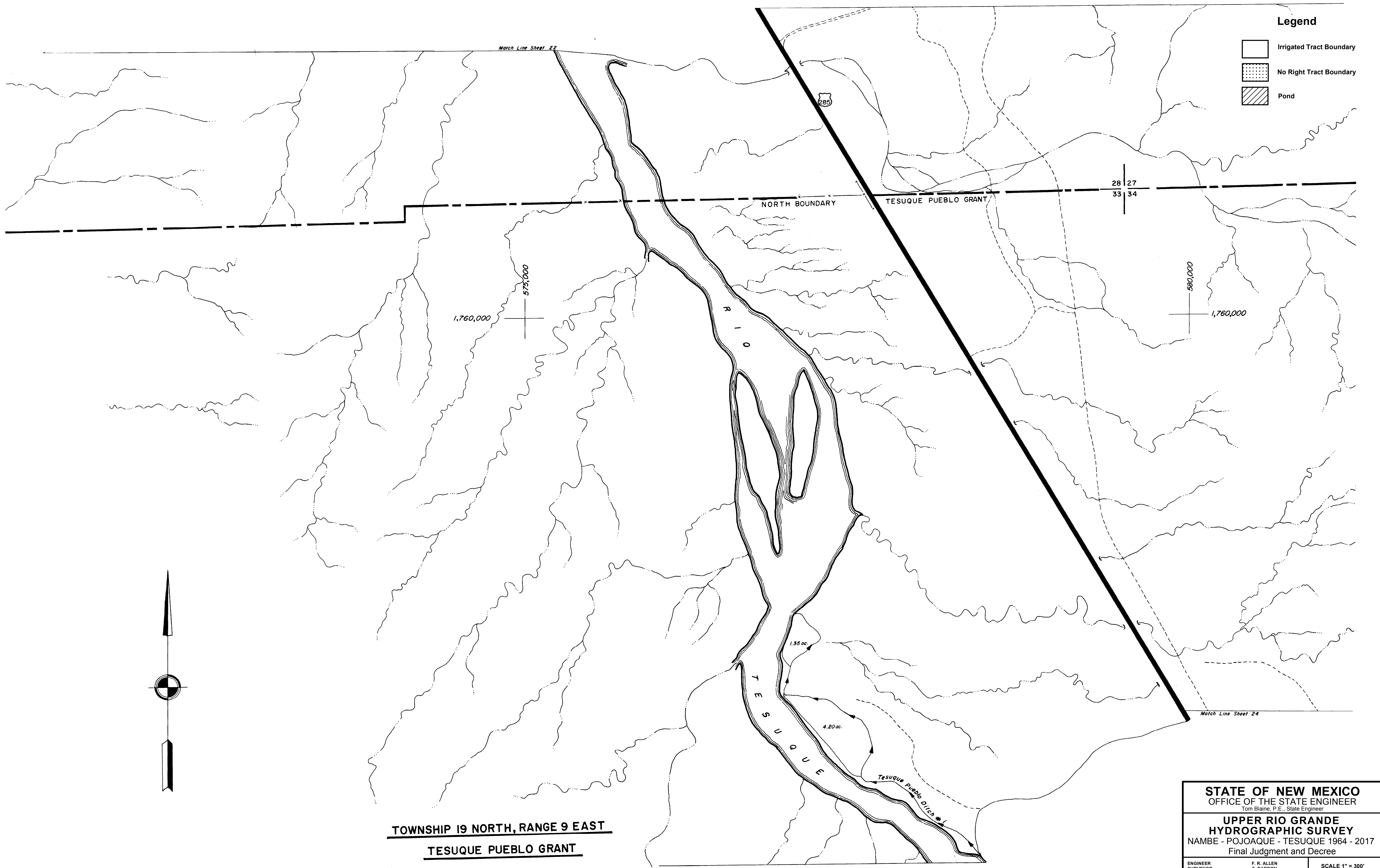


Legend

-  Irrigated Tract Boundary
-  No Right Tract Boundary
-  Pond



TOWNSHIP 19 NORTH, RANGE 9 EAST
TESUQUE PUEBLO GRANT

STATE OF NEW MEXICO OFFICE OF THE STATE ENGINEER <small>Tom Blaine, P.E., State Engineer</small>	
UPPER RIO GRANDE HYDROGRAPHIC SURVEY NAMBE - POJOAQUE - TESUQUE 1964 - 2017 Final Judgment and Decree	
ENGINEER SURVEYOR STEREOCOMPILATION TRACED BY APPROVED	F. R. ALLEN F. BARRON J. L. THOMAS A. BACIGALUPA
SCALE 1" = 300' SHEET NO. 23	